

Battery Wharf

Boston, Massachusetts

*Focus on
Precast Concrete Solutions*



The Battery Wharf mixed-use development being constructed along Boston's inner harbor features a precast concrete structural system fabricated by Strescon Limited. The project extends the shoreline out into the harbor water, creating a courtyard around which the other buildings will be focused. The \$148-million project includes 104 condominiums, a 150-room Regent International hotel, an 18,000 sq. ft. spa, 40,000 sq. ft. of retail space and an underground parking garage for 376 cars.

At the center of the project is a courtyard supported by a European designed-precast concrete system. Although used widely in Europe this is the first time the system has been adapted for the United States. The innovative design creates a structurally secure platform.



Project: Battery Wharf - Boston, Massachusetts
Architect: The Architectural Team - Chelsea, Massachusetts
Structural Consultants: McNamara / Salvia - Boston, Massachusetts
Construction Manager: Skanska USA - Boston, Massachusetts
Wharf Contractor: PIHL - RDA Battery Wharf LLC - Quincy, Massachusetts



website: www.strescon.com
e-mail: sales@strescon.com

Corporate Office
400 Chesley Drive
PO Box 3187
Saint John, NB E2M 3S3
Phone: 506-632-2600
Fax: 506-632-7689

New Brunswick Plant
101 Ashburn Road
Saint John, NB E2L 3W2
Phone: 506-633-8877
Fax: 506-632-7576

Nova Scotia Plant
131 Duke Street
PO Box 44205
Bedford, NS B4A 3Z8
Phone: 902-494-7400
Fax: 902-494-7401

New England Office
25 Burlington Mall Road
Burlington, MA 01803
Phone: 781-221-2153
Fax: 781-221-2155

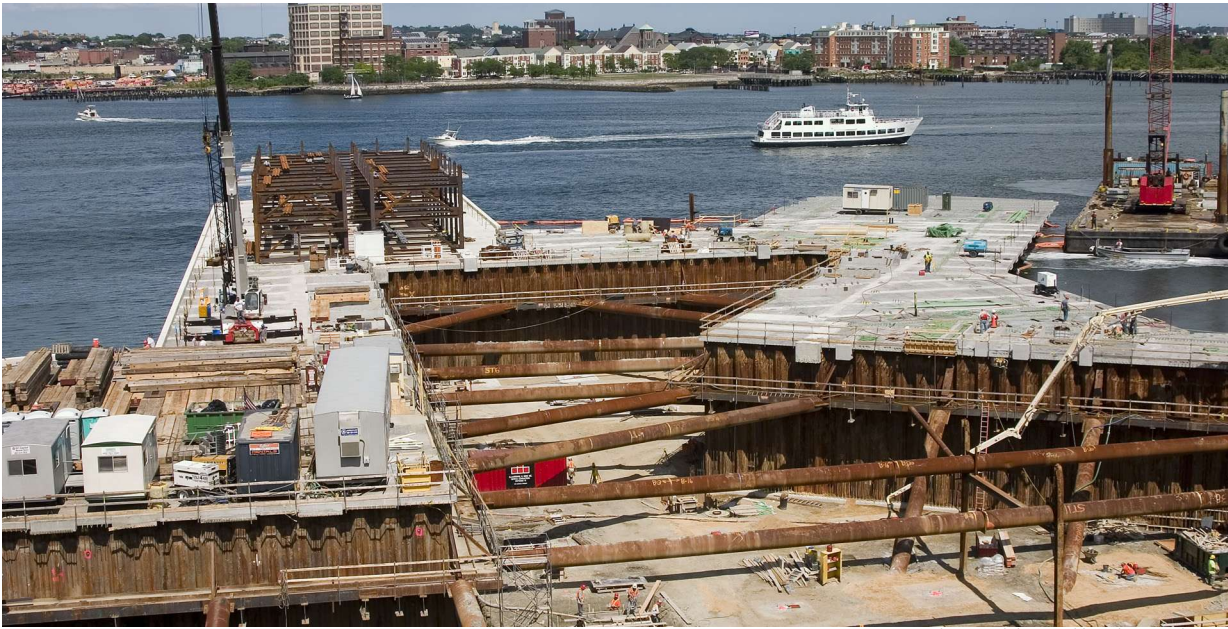
Strescon is a member of the OSCO Construction Group

W H A R F S T R U C T U R E S
S t r u c t u r a l B u i l d i n g S y s t e m s



The design features precast concrete solid slabs, beams, pile caps, perimeter beams and specially designed “troughs”. The troughs are 4-foot-deep U-channels, placed on precast concrete piles and supported temporarily with steel members. Reinforcing steel is run through the channel and precast concrete slabs are then laid over the tops. The hollow center portion is then filled with concrete, and another 3 inches of concrete is poured over the slabs. Due to the complicated logistics of working along the harbor, the components had to be set from a barge.

The courtyard also includes precast concrete parapet panels around the edges, as a safety barrier for traffic and pedestrians. Condominium and hotel structures will be built facing the courtyard.



Photograph by Hutchins Photography Inc.



website: www.strescon.com
e-mail: sales@strescon.com

Strescon is a member of the OSCO Construction Group